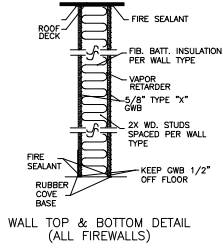




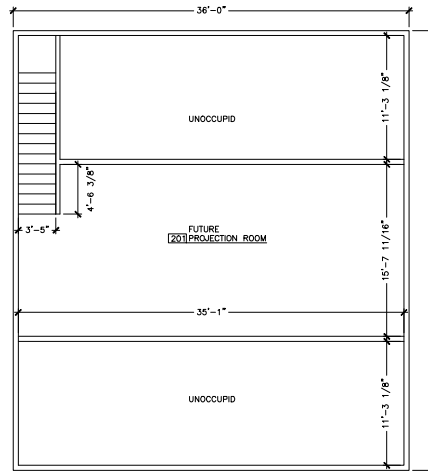
TRAVEL PATHS

PATH #	TOTAL	DEAD END LENGTH	COMMON PATH LENGTH	PATH DESCRIPTION
TP1	TBD	TBD	TBD	FROM TBD # TO TBF EXIT #
TP2	TBD	TBD	TBD	FROM TBD # TO TBF EXIT #
TP3	TBD	TBD	TBD	FROM TBD # TO TBF EXIT #



LEGEND

	EXIT LIGHT		WINDOW TYPE
	DOOR NUMBER		FLOOR DRAIN
	WALL TYPES SEE WALL TYPE DETAILS		AUTO. DOOR OPENER WALL CONTROL PAD
	FIRE EXTINGUISHER		FIRE ALARM PULL STATION
	EMERGENCY LIGHTS		HORN STROBE 2 CANDELA CEILING MOUNTED
	SMOKE DETECTOR		HORN STROBE 2 CANDELA WALL MOUNTED
	HEAT DETECTOR		STROBE ONLY 15 CANDELA WALL MOUNTED
	MONOXIDE DETECTOR		
	ROOM NUMBER		



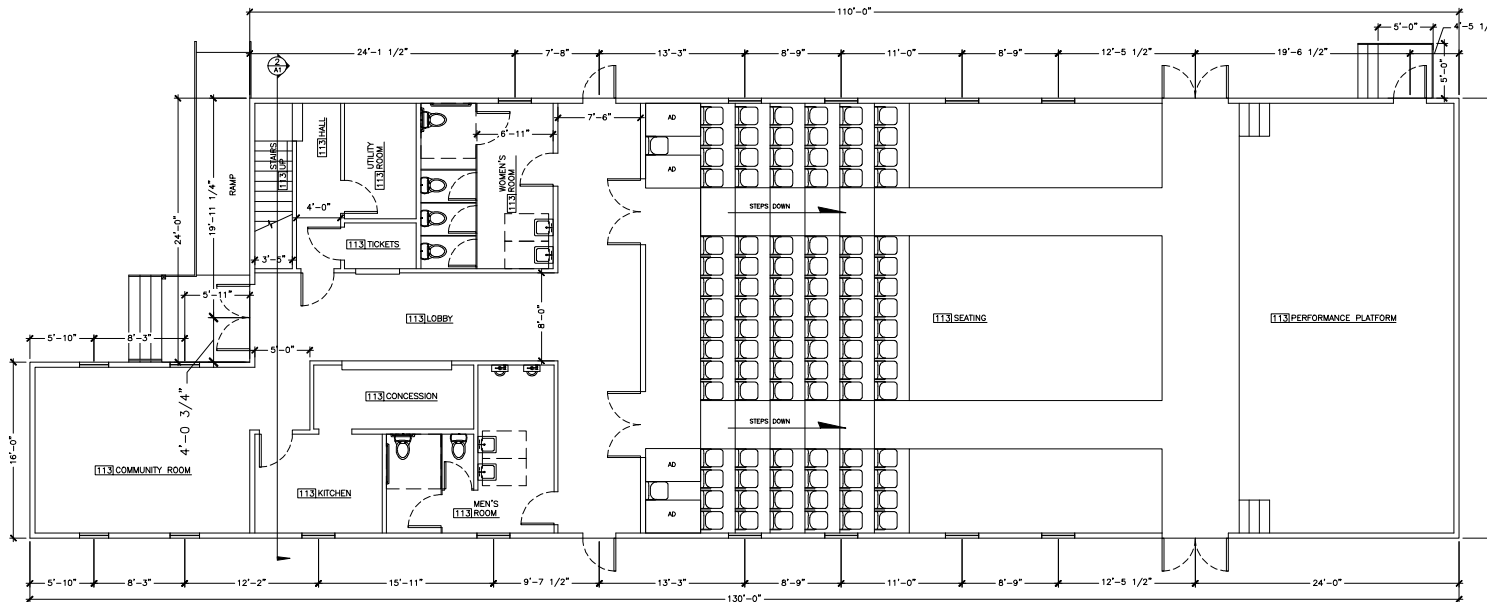
OPTION 1 2ND FLOOR PLAN (A1)
SCALE: 3/16" = 1'-0"

GENERAL NOTES:

- INTENT OF THIS PLAN SET IS TO DEPICT A FLOOR PLAN AND ASSOCIATED ACCESSORIES REQUIRED TO MEET LIFE SAFETY, ADA, IBC AND MUBEC AS THEY RELATE TO OCCUPANCY, ACCESSIBILITY AND EGRESS REQUIREMENTS. IT IS NOT INTENDED AS A CONSTRUCTION SET.
- BUILDING IS A PROPOSED MAINTENANCE FACILITY CONSISTING OF VEHICLE AND EQUIPMENT MAINTENANCE AREAS, PARTS STORAGE, OFFICE SPACE AND STAFF SUPPORT FACILITIES.
- BUILDING IS TO BE EQUIPPED WITH INTERCONNECTED "BUILDING ELECTRICAL POWERED" / BATTERY BACKUP SMOKE DETECTORS THROUGHOUT IN ACCORDANCE WITH NFPA 72.
- BUILDING IS TO BE EQUIPPED WITH A MANUAL FIRE ALARM SYSTEM CONSISTING OF PULL BOXES AND HORN / STROBE ANUNCIATORS IN ACCORDANCE WITH NFPA 72.
- EXIT PATHS TO BE MARKED WITH ILLUMINATED EXIT SIGNS AS SHOWN.
- EMERGENCY LIGHTING PACKS AND REMOTE LIGHT HEADS ARE TO BE FITTED THROUGHOUT THE BUILDING AS SHOWN.
- PROVIDE (1) K-CLASS 30 LB. FIRE EXTINGUISHER WITHIN 30 FEET OF KITCHEN FRYING EQUIPMENT IF PRESENT IN ACCORDANCE WITH NFPA 10. ALL OTHER FIRE EXTINGUISHERS TO BE 10 LB. TRI-CLASS DRY CHEMICAL ABC W/ UL RATING OF 4-A80-B-C MINIMUM IN ACCORDANCE WITH NFPA 1019.7.4.1.

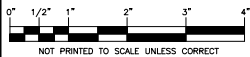
GENERAL NOTES:

- INTENT OF THIS PLAN SET IS TO DEPICT A FLOOR PLAN AND ASSOCIATED ACCESSORIES REQUIRED TO MEET LIFE SAFETY, ADA, IBC AND MUBEC AS THEY RELATE TO OCCUPANCY, ACCESSIBILITY AND EGRESS REQUIREMENTS. IT IS NOT INTENDED AS A CONSTRUCTION SET.
- BUILDING IS A PROPOSED MERCANTILE CLASS "C" OCCUPANCY "CONVENIENCE STORE" INCLUDING TAKE-AWAY FOOD PREPARATION, CHILLED / HOT BEVERAGES, PACKAGED FOOD, DRY GOODS, LIQUOR AND TOBACCO. NOT INTENDED FOR EAT-IN SERVICE.
- BUILDING IS TO BE EQUIPPED WITH INTERCONNECTED "BUILDING ELECTRICAL POWERED" / BATTERY BACKUP SMOKE DETECTORS THROUGHOUT IN ACCORDANCE WITH NFPA 72.
- BUILDING IS TO BE EQUIPPED WITH A MANUAL FIRE ALARM SYSTEM CONSISTING OF PULL BOXES AND HORN / STROBE ANUNCIATORS IN ACCORDANCE WITH NFPA 72.
- EXIT PATHS TO BE MARKED WITH ILLUMINATED EXIT SIGNS AS SHOWN.
- EMERGENCY LIGHTING PACKS AND REMOTE LIGHT HEADS ARE TO BE FITTED THROUGHOUT THE BUILDING AS SHOWN.
- PROVIDE (1) K-CLASS 30 LB. FIRE EXTINGUISHER WITHIN 30 FEET OF KITCHEN FRYING EQUIPMENT IF PRESENT IN ACCORDANCE WITH NFPA 10. ALL OTHER FIRE EXTINGUISHERS TO BE 10 LB. TRI-CLASS DRY CHEMICAL ABC W/ UL RATING OF 4-A80-B-C MINIMUM IN ACCORDANCE WITH NFPA 1019.7.4.1.



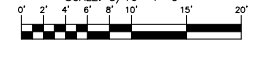
OPTION 1 FLOOR PLAN (A1)
SCALE: 3/16" = 1'-0"

REPRODUCTION SCALE



NOT PRINTED TO SCALE UNLESS CORRECT

SCALE: 3/16" = 1'-0"



NO.	DATE	REVISIONS

MILBRIDGE THEATER
OPTION 1 FLOOR PLAN

PROJECT NAME: MILBRIDGE THEATER TRUSTEES
PROJECT NO.: 19314
DATE: 1/21/24
DRAWN BY: JAC
CHECKED BY: JAC
SCALE: AS SHOWN
PROJECT ADDRESS: 100 W. MAIN ST., MILBRIDGE, MAINE 04957

Plymouth Engineering, Inc.
P.O. Box 48 30 Lower Deetail Road
Plymouth, Maine 04068
Tel: (603) 885-4848
www.plymouthengineering.com

PRELIMINARY

PLANS NOT SEaled ARE FOR PLANNING PURPOSES ONLY AND ARE NOT BECOMING RECORD DRAWINGS UNTIL THEY ARE SEaled BY THE ENGINEER.

sheet 1 of TBD
A1

